

Spectrum Sweeper

X SWEEPER

GPS OPTION

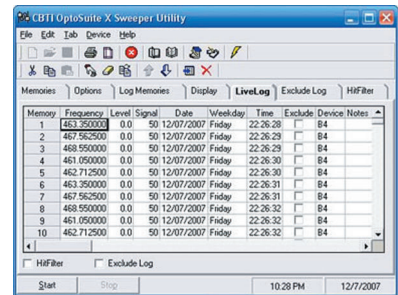
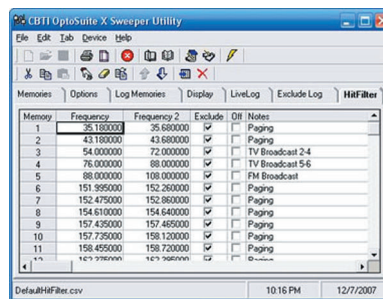
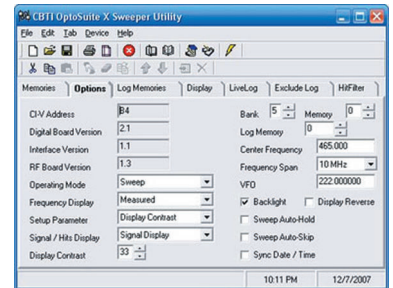


The X Sweeper has an optional GPS receiver and antenna. The GPS receiver module and antenna are factory installed inside the X Sweeper. The GPS option displays the Latitude and Longitude coordinates of the X Sweeper location at the time it detected a signal.

GPS MODULE AND ANTENNA
SOLD SEPARATELY

OPTO SUITE X SOFTWARE

The OptoSuite X software extends the X Sweeper live display to your computer. Download memories, configure all settings including sweep span and center frequency. Live Log records frequency hits in real time. Hit Filter eliminates undesired real time frequency hits. Compatible with 95,98,ME,NT4,2000,XP and Vista. (Software sold separately)



FEATURES

- Sweeps range of 30MHz to 3GHz in one second
- 10 different sweep spans ranging from 3GHz to 100kHz
- 64X128 graphical display with white LED backlight
- Built-in VFO mode for manually tuning to a specific frequency
- Super Sensitivity: Receive two-way communications up to 1/4 mile away
- 10 memory banks with 100 frequencies in memory for each bank. Total of 1000 unique memories
- Record frequency, hits (65,000), time/date, signal strength, lockout status, lat/long (GPS optional)
- RS232 interface for memory download (cable included)
- Real-Time Clock / Calendar with battery back-up
- Lockout up to 1000 frequencies
- CI5 interface for Reaction Tune (For a list of compatible receivers see the Digital Scout specs)
- Internal Speaker, Audio earphone/headphone jack
- Battery operated (8 AA alkaline (included), NiCad or NiMH) AC adapter included (9-12VDC)
- Tilt stand included
- Ideal for Homeland Security, Two Way Radio, Military, Broadcast and more

X SWEEPER TECHNICAL SPECIFICATIONS

Frequency Range:	30MHz - 3GHz (US versions: Cellular blocked except for FCC approved users)
Modulation:	FM analog
Frequency Response:	50 - 3000MHz
Auto Sweep Time:	1 Second
Frequency Measurement:	100Hz Resolution, +/- 500Hz Accuracy
Sensitivity:	300uV@500MHz
Input:	50 Ohm BNC
Outputs:	Internal Speaker, Audio Headphone Jack, Serial Interface, CI5
Display:	64X128 Graphical display with white LED backlight
Power:	8 AA Alkaline (included), NiCad or NiMH (appx. 8 hour run time) AC adapter (9-12VDC/350mA/center positive)
Size:	8"H x 4.25"W x 2.25"D Injection molded plastic
Serial Interface:	RS232C interface and CI5 interface